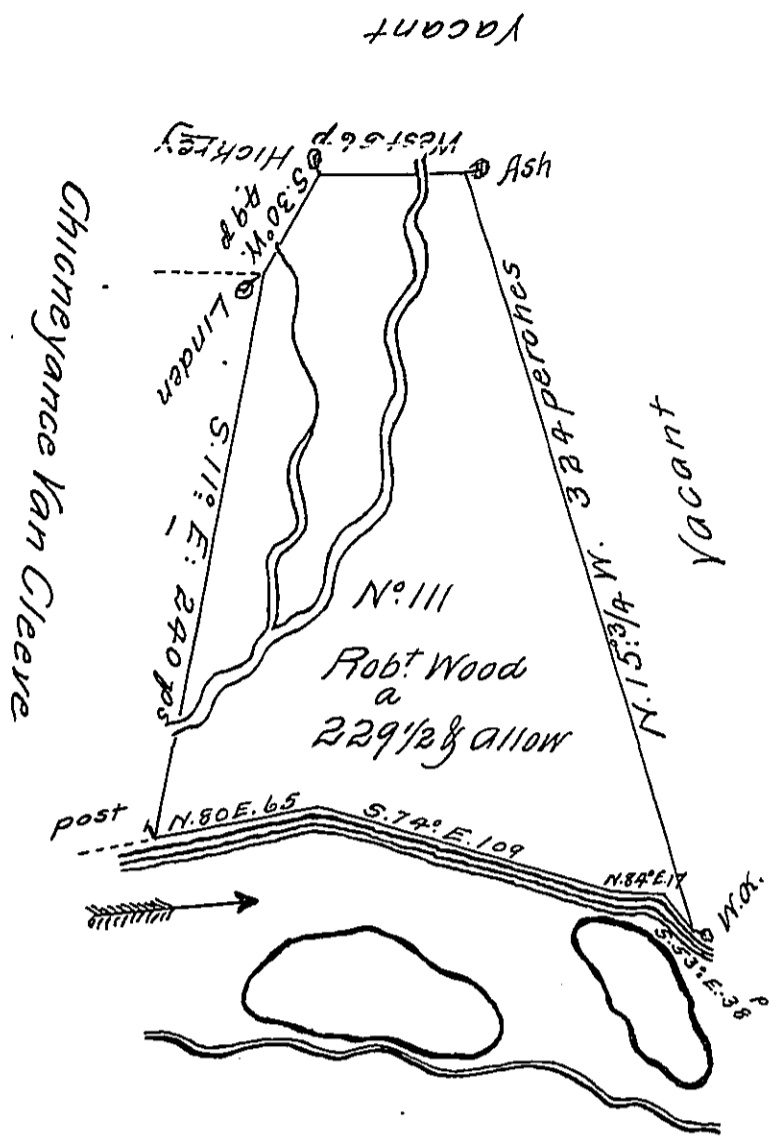


K-25



A Draught of a Tract of Land Called Kingwood Situate on the Easterly Side of the North East Branch of Susquehanna River at a place called Wiesaughtking or Rush Meadows adjoining land Surveyed for Chicneyance Van Cleeve in the County of Northumberland Containing two hundred and twenty nine acres and an half with the usual allowance of six p Cent for Roads &^{ta} Surveyed for — Robert Wood the 26th day of September 1773 in pursuance of an Order dated the 3^d day of April 1769. Number 111 —
 by Cha^s Stewart Dep^y Sur^r!
 To John Lukens Esq^r. Surr. Gen!
 Resurveyed the 7th Day of November 1790 by W^m Gray D. S.
 now Luzerne County

IN TESTIMONY that the above is a copy of the original remaining on file in the Department of Internal Affairs of Pennsylvania, made conformably to an Act of Assembly approved the 16th day of February, 1833, I have hereunto set my Hand and caused the Seal of said Department to be affixed at Harrisburg, this Twenty Second day of June 1911

Henry Houch
 Secretary of Internal Affairs.